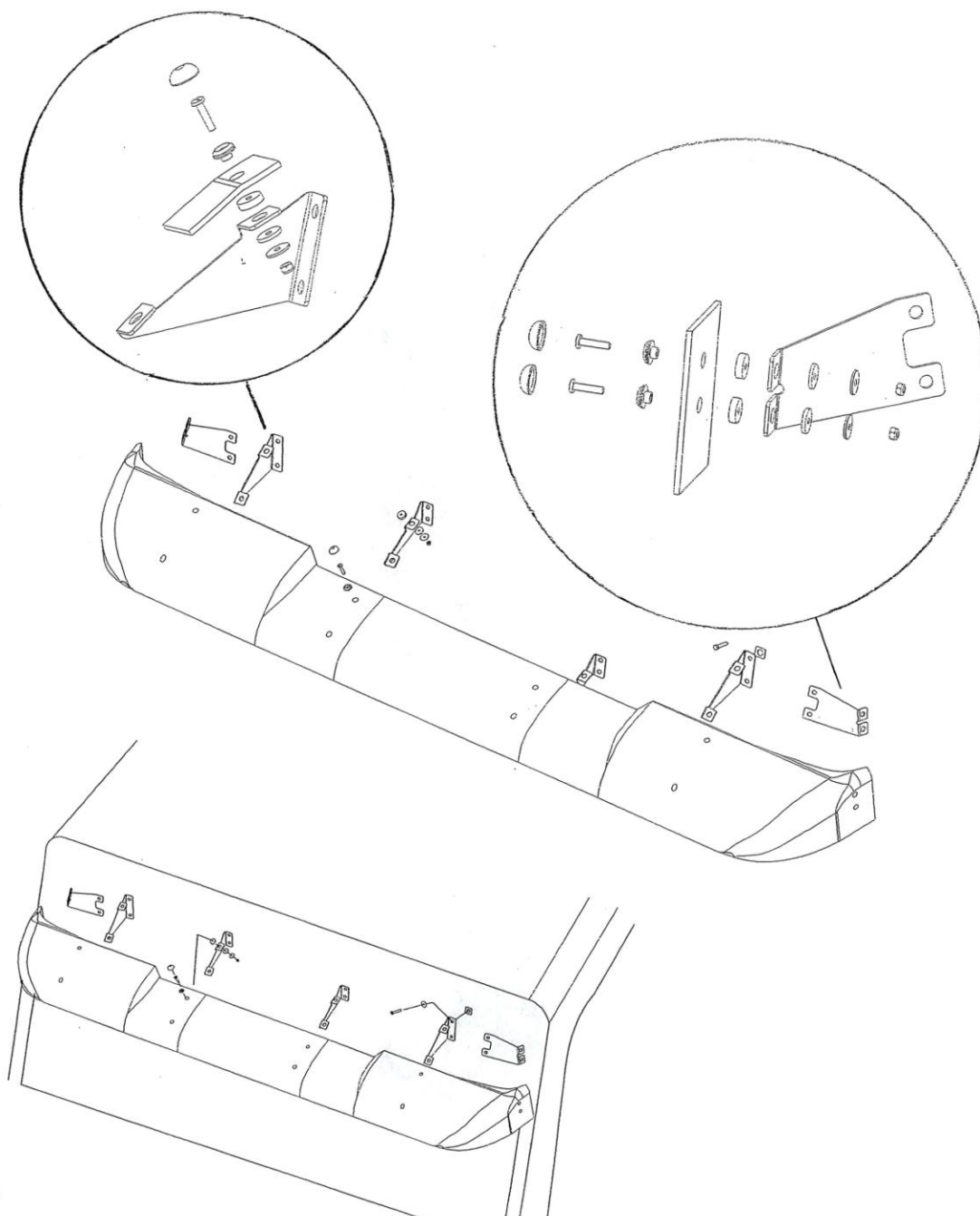
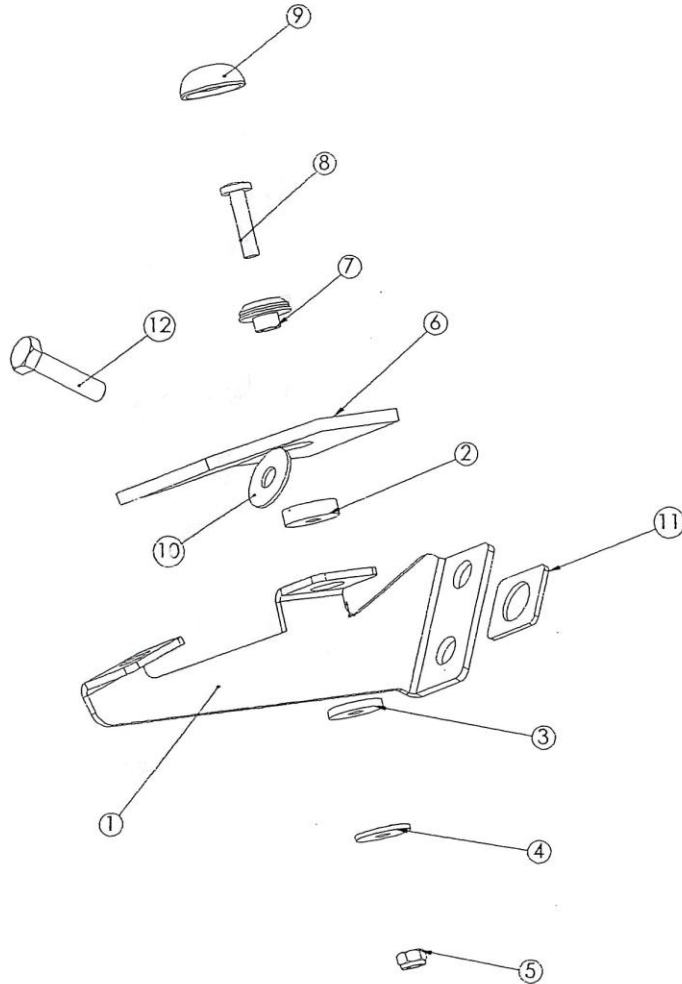


Ref: **1004.10501** **ISTRUZIONI DI MONTAGGIO - MOUNTING INSTRUCTIONS**

Adattabile a - Suitable to : COS. DA XF

XF





XF

1. BRACKET	1 PC
	1 PC
	2 PCS
	2 PCS
2. RUBBER WASHER 6MM	12 PCS
3. RUBBER WASHER 3 MM	12 PCS
4. WASHER 6X22	12 PCS
5. NYLOK NUT M6	12 PCS
6. PLASTIC	1 PC
7. COVER COLLAR	12 PCS
8. SCREW M6X30	12 PCS
9. COVER HAT	12 PCS
10. WASHER 8X25	12 PCS
11. RUBBER GASKET	12 PCS
12. HEXAGONH. SCREW 8X35	12 PCS